

State of Wyoming Corner Record

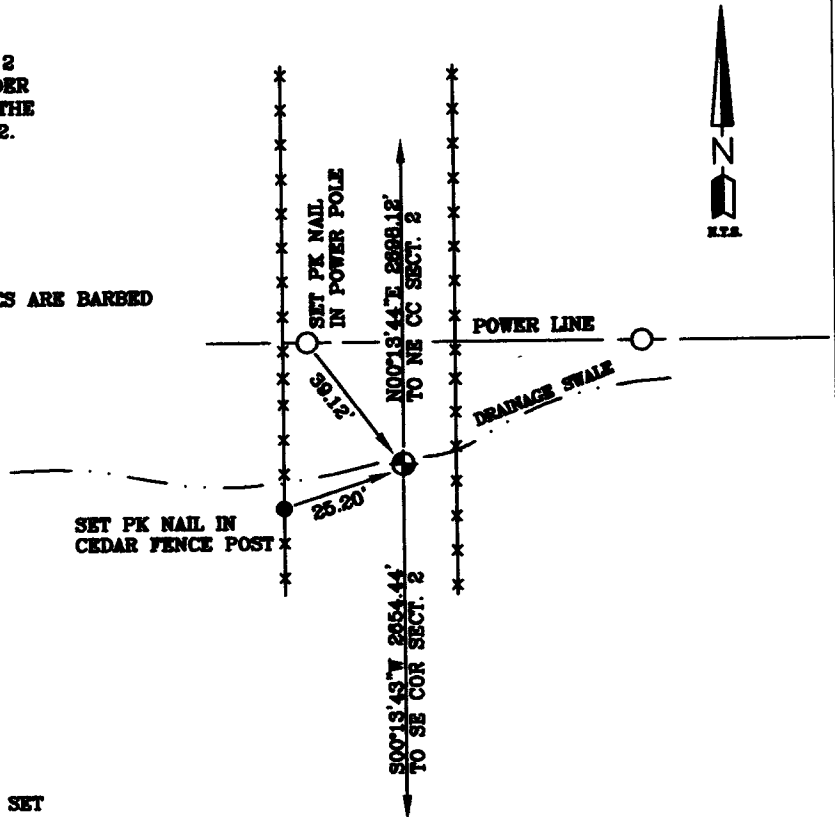
(In compliance with the **CORNER PERPETUATION AND FILING ACT**, Wyoming Statutes, 1997 Section 33-29-140 et. seq., and the Rules and Regulations of the Board of Professional Engineers and Professional Land Surveyors)

Reverse side of this form may be used if more space is needed.

Record of original survey and citation of source of historical information (if corner is lost or obliterated). Description of corner monumentation evidence found and/or monument and accessories established to perpetuate the location of this corner. Sketch of relative location of monument, accessories, and reference points with course and distance to adjacent corner(s) (if determined in this survey). Method and rationale for reestablishment of lost or obliterated corner.

G.L.O. RECORD:
 NORTH BETWEEN SECTIONS 1 AND 2
 VA. 15°11'E. SET A GRANITE BOULDER
 AT 40.00 CHAINS 13"X10"X4" FOR THE
 1/4 CORNER TO SECTIONS 1 AND 2.

NOTE:
 ALL FENCES ARE BARBED
 WIRE.

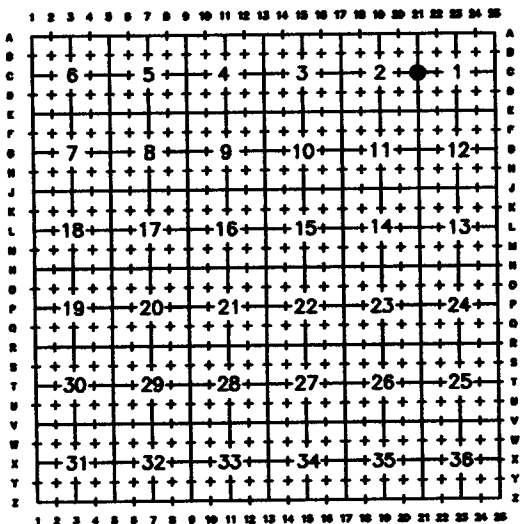


AT THE CORNER:
 FOUND NOTHING.
 PLACED A 2 1/2" ALUMINUM CAP SET
 ON A 5/8" X 24" REBAR IN THE
 BOTTOM OF A DRAINAGE SWALE FLUSH
 WITH GROUND STAMPED AS SHOWN.
 CORNER POSITION WAS ESTABLISHED
 BY SINGLE PROPORTION METHOD
 USING THE SOUTHEAST CORNER OF
 SECTION 2 AND THE NORTHEAST CC
 OF SECTION 2.

Date of Field Work: 9/15/06

Office Reference: XXX

Cross Index Plat



Corner Name East 1/4 Corner Section 2, T 16 N, R 67 W, 6th P.M.

County: Laramie Wyoming

SBRPEPLS/PLSW: March 1994; PLSW January 1998

This corner record was prepared by me or under my direction and supervision.

Firm/Agency, Address

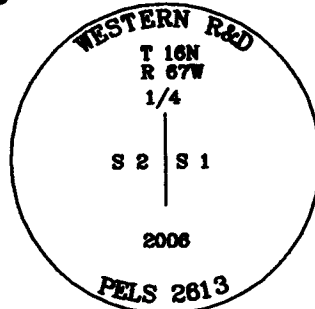
Western R&D, Ltd.
5809 Yellowstone Rd., Suite B
Cheyenne, Wyoming 82009

SEAL & SIGNATURE

Telephone Number: (307) 632-5656



Denotes Monument Set



Cross-Index No.: C-21